

OUR FATHER IN HEAVEN  
HOLY IS YOUR NAME  
YOUR KINGDOM COME  
**YOUR WILL BE DONE**  
ON EARTH AS IT IS IN HEAVEN

Matthew 6:9-10



**KINGDOM BUILDERS**

*2024 project guide*

# “YOUR WILL BE DONE”

This phrase is part of the Lord’s teaching on prayer. Jesus was instructing His disciples to seek to be in alignment with what God is doing in every situation to establish His Kingdom. As we consider the impact of the church in today’s world maybe it’s a good idea to reconsider and refocus our attention on what the Lord’s will is for our broken world.

The Lord’s will is very clear, He desires Glory and Relationship. When I think about those two concepts it makes me want to do everything I can, to be in a place where I can personally give the greatest amount of glory to the one who is worthy of it all. Secondly, it makes me think about my relationship with the Lord, am I faithful, am I available, and am I willing and ready for whatever He desires?

But it also makes me think about all the broken and hurting people around the world who do not have a relationship with the Lord. God’s Will is to have a living relationship with as many people as possible.

This year I am believing that as we commit to giving generously towards Kingdom Builders we will become active participants in the Will of the Lord becoming a reality. There are 100 other good things that we could give ourselves to, but this one idea reigns supreme, to see the Lord’s will completed.

Our Kingdom Builders giving is more than just another way to give towards “projects” instead it’s an opportunity for us to be aligned with God’s heart to intentionally impact the world for Jesus our King.

*When we commit to Kingdom Builders it opens the doors of possibilities for generations to come to find and experience a relationship with their creator.*

This year we have prayerfully identified several Global Projects, Strategic Church Expansion efforts, and plans for aggressive Leadership Development initiatives that we believe will have a tremendous Kingdom impact.

I believe what is before us is a grand invitation to be an instrument in the hands of God to bring about hope. As you consider your involvement in seeing the Lord’s Will be done and God’s Kingdom Come, would you simply be ready and willing to be a vessel for lives to be changed and fulfilled in Jesus?

Thank you for being Kingdom-Minded and available for God. *Lord, May Your Will Be Done.*



A stylized, handwritten signature in white ink, consisting of several overlapping loops and a long horizontal stroke.

*Troy Vandament  
Lead Pastor*

# \$200,000

## PART ONE - **CHURCH EXPANSION**

Future Facilities

Multi-Sites

Improvements

## PART TWO - **GLOBAL PROJECTS**

Convoy of Hope – One Day

Christmas Blessing

Live Dead – Church Planting

Serve Day

Convoy of Hope – Disaster Response

Project Rescue – Anti-Sex Slavery

iGO Missions Project

Church Rescue

Wind of the Spirit

Speed the Light

UNO Chi Alpha Fall Kickoff

Victory Boxing

## PART THREE - **FUTURE LEADERS**

Leadership Training

Future Leaders Grants

Mission iGo Trips Grants



PART

*Church Expansion*

\$120,000

ONE

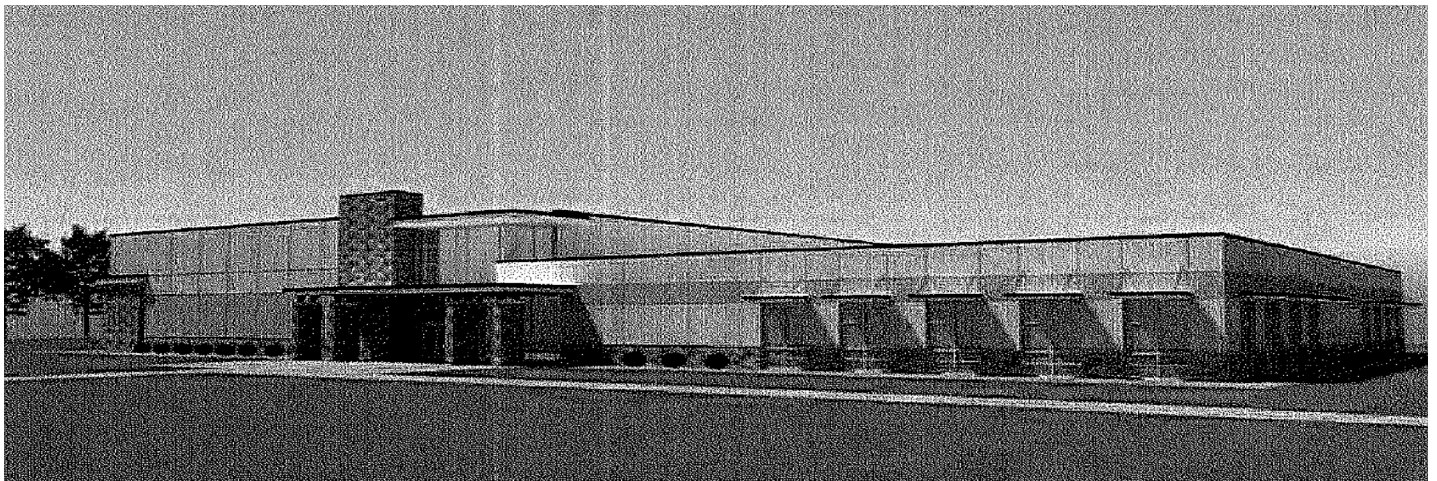
*In Matthew 5* Jesus tells us the local church is the light of the world. Kingdom Builders is committed to funding the growth of the local church through expanding our own facilities and campuses. Our goals in Local Church Expansion include things like: future facilities, multi-campuses, and improvements to current facilities so we can create a space for every person to find their place. This is not done for comfort, fancy buildings, or praise but for the purpose of making the best possible environment for those not yet here to personally know and discover a loving relationship with Jesus.

## FUTURE FACILITIES: \$100,000

Future facilities is a project that helps us to be in a position to reach as many people as possible for Christ by having adequate facilities to set the stage for growth and life change.

Over the past several years, we have been actively saving for the construction of a new facility for our Papillion Campus. In 2022, we were able to pay cash for 7 acres of prime land on Cornhusker Road between 60th and 64th Streets. The property is ready to build on, but we need to continue building a down payment on the cost of construction so that we can “live within our means.” Our goal is to get to a point where we have 50% down for the construction of a new facility. We are roughly 65% of the way to our goal.

When you give towards Kingdom Builders it helps us position ourselves for future growth.





## MULTI-SITE CAMPUS: \$10,000

In the Metro and surrounding counties there are several opportunities for more campuses. This goal is to set aside funds for the addition of another Southridge campus where more people can discover life change and fulfillment in Jesus.



## IMPROVEMENTS: \$10,000

We always have dreams and ideas to make what we do here at Southridge even better and more effective. It's our goal to set aside funds for facility and atmosphere improvements in technology, kids, youth, and the overall first impression of our church. We aim to create the best possible environment that will make discovering, growing, and finding a place of influence with God a reality.

# PART

*Global Projects*

\$65,000

# TWO

*In Mark 16* Jesus commands us to go into all the world and preach the Gospel to all creation. Southridge Church has a goal of giving 10% of our general tithe to support monthly missionaries and missions organizations. Currently, we financially support over 20 missionaries and missions organizations out of our general tithe. Kingdom Builders also gives us the opportunity to support key missions projects such as: humanitarian efforts, disaster relief, church planting efforts, and outreach events. Everyone in every nation deserves a chance to hear the Gospel.

# CONVOY OF HOPE

## ONE DAY: \$25,000

Convoy of Hope started as a Christian Organization with a simple goal of showing the world what it means to love your neighbor as yourself. Currently Convoy of Hope—One Day to Feed the World feeds 180,000 kids in impoverished locations around the world. Their vision is to feed children in need, organize community outreaches,



train women to start businesses, help farmers increase their yield in developing nations, and to partner with like-minded organizations and rural churches.

## CHRISTMAS BLESSING: \$5,000

Every Christmas we seek those in our community and across the state who do good work for the Lord. Our goal is to bless and honor those who are simply faithful in serving their community with a great heart. This allows us to be joyful in giving and encourage those who serve.

## LIVE DEAD CHURCH PLANTING: \$5,000

Live Dead is a grassroots church planting movement that plants churches among unreached peoples. In Live Dead areas there are over 4600 unreached people groups, representing 2.99 billion unreached individuals. Our goal in partnering with Live Dead is to plant a church among the unreached and see Jesus glorified globally.

## SERVE DAY: \$5,000

Serve Day is our local mission outreach to the communities we live in. We partner with organizations and neighbors to be the Church through compassion to those around us and complete them in one Serve Day.





## CONVOY OF HOPE DISASTER RESPONSE: \$5,000

Every year there are natural disasters that happen world-wide and devastate thousands of people. Convoy of Hope—Disaster Relief puts feet on the ground in a timely manner to help in the rescue, relief, and restoration. This partnership allows us to be able to move quickly in providing assistance when and where it is most needed.

## PROJECT RESCUE ANTI-SEX SLAVERY: \$5,000

At Southridge, we have a passion for people. Project Rescue is an Anti-Sex Slavery ministry that provides compassion and care for those involved in sex-trafficking. Our goal is focused on helping to establish safe houses in Asia, Europe, Africa, and the Middle East.

## iGO MISSIONS PROJECT: \$5,000

Each year as a church we plan iGO missions trips to assist existing mission work around the world. This project focus allows us to provide the much needed resources for the missions work on the field.



## CHURCH RESCUE: \$3,000

The current trend of churches closing is at an all time high. Some congregations are on the brink of throwing in the towel and giving up. Church Rescue is an organization that strategically works with dying churches and breathes life back into them. By partnering with Church Rescue we are able to help churches stay alive and thrive.

## WIND OF THE SPIRIT: \$3,000

Each year there are moments and opportunities that arise where God is leading us by His Spirit to make a difference in the world. Our goal is to be ready and in position when the Spirit of God calls.

## SPEED THE LIGHT: \$2,000

Speed the Light is a student-initiated, volunteer, charitable program that provides much needed equipment to missionaries across the nation and in over 180 countries around the world.

## UNO CHI ALPHA: \$1,000

Chi Alpha is focused on reaching students for Christ at our universities and colleges throughout the United States. We are partnering with UNO Chi Alpha to provide the resources to host a Fall Kickoff on the UNO Campus as a springboard to build relationships and create opportunity for ongoing ministry during the upcoming semesters.

## VICTORY BOXING: \$1,000

Victory Boxing is a Christ-Centered outreach in South Omaha that focus's on helping at risk youth. Using the sport of boxing as a foundation to build relationship with young people to establish faith and direction for life.



G L O B A L

*Everyone in every nation  
deserves a chance to hear  
the Gospel.*

P R O J E C T S

PART

*Future Leaders*

\$15,000

THREE

We would risk everything for the next generation of leaders to be raised up because they are the church now and the church of the future. *In 1 Timothy* Paul writes to the young leader, Timothy, encouraging him to set the example in speech, conduct, love, faith, and purity. As Kingdom Builders we believe in coming alongside our future spiritual leaders to equip them to make a difference. Our Kingdom Builders goal for future leaders is to create opportunities that encourage and prepare them to impact the world for Christ.

## LEADERSHIP TRAINING: \$8,000

At Southridge we believe Spiritual Leadership is one of our greatest needs and greatest assets. We want to raise up and send out an army of Spiritual Leaders that will impact the local church, the community and the world. Our goal is to create leadership training and equipping events that raise the bar of leadership in our area.





## FUTURE LEADERS

GRANTS: \$5,000

Every year there are high school students and kids who would love to go to a Christian camp but cannot fully afford it, and there are those who desire to pursue ministry credentials who cannot fully afford doing so. Our goal is to remove some of the roadblocks and make it possible for anyone who wants to go to camp or pursue credentials.

## MISSIONS iGO TRIP

GRANTS: \$2,000

Going on a Mission Trip is a life changing experience. Our goal at Southridge is that everyone would go on at least one mission trip. We want to make it possible for those participating in their first mission trip to be financially supported in the process.

## *How does Kingdom Builders fit with Southridge Giving?*

### TITHE

Tithe stands for 10%. It is our first step in giving; it is for the regular operation of the local church, and is based on the understanding that everything belongs to the Lord.

### KINGDOM BUILDERS

Kingdom Builders is above and beyond the tithe. We would never invite you to give to Kingdom Builders without first giving of the tithe. Above and beyond giving is an act of sacrifice and worship. This recognizes that God has given everything I have as a resource. I now sacrificially and willingly give thus expressing my desire to be involved in what God is doing. It is realizing the extra or abundance or even the little I have is for God's use, not mine. I am just a vessel.

### SPECIAL

Special Offerings are rare but happen. We purposefully try to limit what we are giving towards so people don't feel bombarded with giving requests.

# AREAS OF

## Tithe

*Facilities*

*Ministry*

*Missions*

*Staff*

*Margin*

## Kingdom Builders

*Local Church Expansion*

*Global Projects*

*Future Leaders*

## Special

*Visiting Missionaries*

*iCare Network*

*Appreciation Gifts*

# GIVING



All of our projects are funded as needed, as available and based on the wisdom and direction of the Kingdom Builders leadership team. All funds received are broken down based on pre-set percentages for each major focus area. We ask people to give towards Kingdom Builders in general and allow it to be applied as necessary.



# Get Involved



## JOIN

*Are you ready to become an active participant in the Will of the Lord today?*



## GIVE

*To give to Kingdom Builders at any time, scan here or text **'\$AMT Kingdom Builders'** to 84321*

*We would love to answer any other questions you may have.*

*Contact: [info@southridgelife.com](mailto:info@southridgelife.com)*

*Learn more by visiting [southridgelife.com](http://southridgelife.com)*



YOUR  
WILL BE  
DONE



... **southridge**  
live life full. church

